



info@gullo.com
www.gullo.com

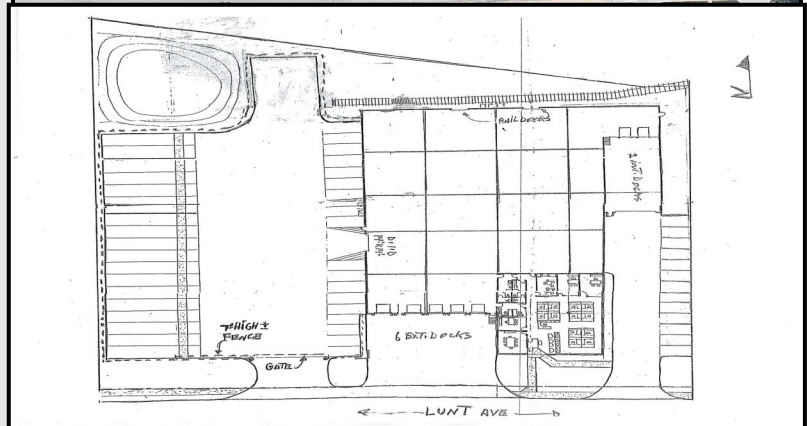
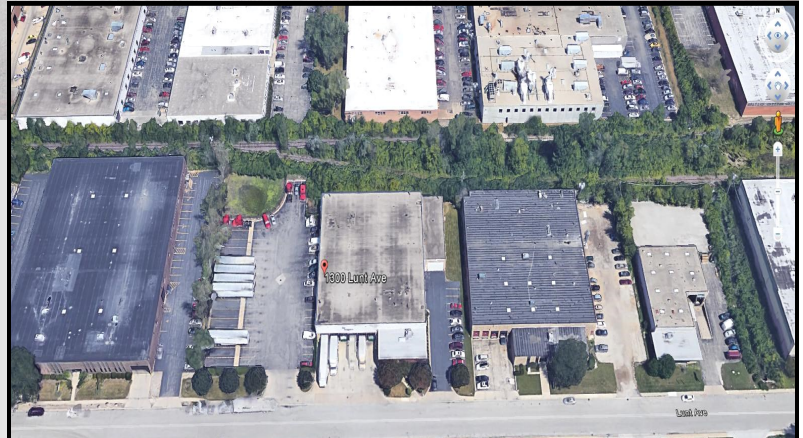
1300 Lunt Avenue

Elk Grove Village, IL



Building Highlights

- 96,073 sf +/- Gross Land
- 28,500 sf +/- Total Building
- 4,000 s.f. +/- Total Offices
- 21' Clear at Low Point
- 19 Car Stalls
- 19 Trailer Parking on site
- 6 Exterior Docks + 2 Interior Docks
- 1 Drive in Door
- 400 Amps, 277/480 Volt, 3-Phase, 4-Wire
- Gas Unit Heaters, Air Conditioned Office
- Wet System
- I-2 Industrial
- CAM: Lessee Responsibility—Estimated \$3.00 psf
- Sales Office/Freight/Logistics/Distribution
- 5 year Lease Term



Building a better image

For more information CONTACT: Giovanni Gullo or Mariann Gullo Phone: 847.364.7000 • Fax: 847.364.7030

Gullo International Realty Group • 1100 Landmeier Road • Elk Grove Village, IL 60007

LinkedIn: www.linkedin.com/company/gullo-international-development-corporation

All information herein is from sources deemed reliable but not guaranteed accurate. Subject to errors, omissions, and to change of price and terms, prior sale or lease, all without notice. In compliance with Illinois law, Gullo International Realty Group (broker) hereby gives written notice of the existence of an agency relationship between broker and the owner of the above referenced property. All Gullo International Realty Group real estate agents represent the owner of the above property in negotiation of price terms, conditions, and the consummation of any lease or sale contract.