

AVAILABLE FOR LEASE IN THE O'HARE MARKET



1020 WOOD DALE RD., WOOD DALE

- NEW CONSTRUCTION! DuPage Real Estate Taxes
- 52,250 sq. ft. w/11,050 sq. ft. Office
- 8 Docks, 2 DID, 25' Clear



800 DIERKING TER., ELK GROVE VILLAGE

- NEW CONSTRUCTION! 12 Yr. Low Real Estate Taxes!
- 100,000 sq. ft. w/up to 14,522 sq. ft. Office
- 22 Docks, 2 DID, 30' Clear



695 TOUHY AVE., ELK GROVE VILLAGE

- 86,300 sq. ft. w/9,700 sq. ft. Office
- Low Taxes!
- 16 Docks, 2 DID, 16 Trailer, 25' Clear



959 A.E.C. DRIVE, WOOD DALE

- 21,300 sq. ft. w/3,200 sq. ft. Office
- 2 Docks, 1 DID, 22' Clear



939 AEC DRIVE, WOOD DALE

- 22,680 sq. ft. w/ 2,800 sq. ft. Office
- 3 Int. Docks, 1 DID, 22' Clear



265 SPRINGLAKE, ITASCA

- 29,478 sq. ft. w/10,368 sq. ft. Office
- 7,500 sq. ft. Showroom, 11,600 sq. ft. Warehouse
- 22' Clear, 1 Dock, 1 DID



800 DILLON AVE. (UNIT 1), WOOD DALE

- 15,240 sq. ft. w/ 3,480 sq. ft.
- 2 Docks, 1 DID, 18' Clear



1100 LANDMEIER RD., ELK GROVE VILLAGE

- 5,000 sq. ft. Office
- 2nd Story w/Balcony



1101 LUNT AVE., ELK GROVE VILLAGE

- 16,579 sq. ft. w/2,000 sq. ft. Office
- 2 Int. Docks, 2 DID, 17' Clear; Low Taxes



2315 LANDMEIER, ELK GROVE VILLAGE

- 32,700 sq. ft. w/ 5,000 sq. ft. Office
- 8 Ext. Docks, 1 DID, 25' Clear; Low Taxes



1125 TOUHY AVE., ELK GROVE VILLAGE

- Truck Terminal
- 10 Dock Doors, Low Taxes



2195 ARTHUR AVE., ELK GROVE VILLAGE

- 25,142 sq. ft. w/4,000 sq. ft. Office
- 11 Ext. Docks, 1 DID, 25' Clear; Low Taxes



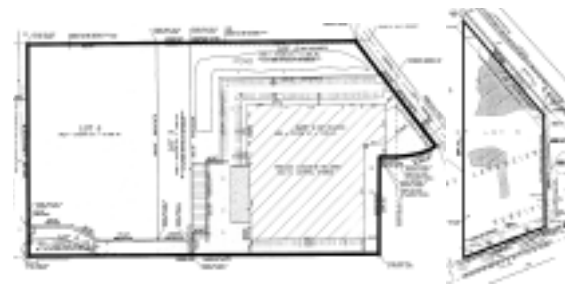
WOODFIELD BUSINESS CENTER

- Approx. 39 acres of vacant improved land
- 1.5 acre to 7.65 acre lots



WOOD DALE & DEVON STS., WOOD DALE

- Located on the highly visible corner of Wood Dale Rd. and Devon Ave.
- Commercial Development approx. 11,000 sq. ft. divisible for lease



AVAILABLE VACANT LAND FOR COMMERCIAL USE

- 8 acres located at the corner of Wood Dale and Thorndale, Wood Dale
- 2 acres located at the corner of Landmeier Road and Higgins Road, Elk Grove Village



“Building a Better Image”

Visit our website to download Listing Sheets,
Floor/Site Plans, Color Photos

www.gullo.com

Contact: Giovanni and Mariann Gullo
847-364-7000

